

- Alkali-feldspar leucogranite and pegmatite
- K-feldspar–phyric granodiorite
- Feldspathic meta-arenite
- Interbedded semipelitic and pelitic gneiss
- Calcsilicate gneiss and marble
- Interbedded psammitic and calcsilicate gneiss
- Psammitic gneiss
- Tonalitic to granitic orthogneiss
- Monzogranite, strongly foliated to gneissic

**Snyder Lake till geochemistry
(aqua regia partial digestion)
V (ppm) in <63 μ m fraction**

- | | |
|-----------|-----------|
| ● 14–16 | ● 24.1–27 |
| ● 16.1–18 | ● 27.1–36 |
| ● 18.1–20 | ● 36.1–43 |
| ● 20.1–22 | |
| ● 22.1–24 | |

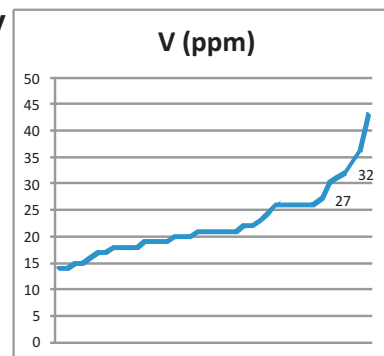


Figure 45: Snyder Lake till geochemistry: partial digestion of <63 μ m fraction, V.